

Mixmaster Duplex

Mixing Shovel Duplex DFA and DK
Mobile Mixer DMA



We are Fliegl.

www.fliegl-baukom.de

GB

MIXMASTER DUPLEX DFA WITH AUTOMATIC FILLING SYSTEM

Concrete, screed, mortar, road construction or paving – the Mixmaster Duplex DFA handles all mixing volumes.



The fastest mixing even with earthmoist materials

Smooth mixing operation – significantly less wear even with larger granulations and recycled material

ADVANTAGES

- Automatic filling system
- Mixing while driving
- Filling, mixing and unloading – all in one operation
- With fork lift pockets
- Volumes between 300 and 1400 liters
- Worldwide in use
- Unloading at different heights
- Fast unloading via outlet chute
- Increased economic efficiency by elimination of the need for a second operator
- Adjustable stirring arm

Also suitable for use under soil liquefaction conditions in landfill and canal construction
Suitable as excavator attachment



Mixmaster Duplex DFA 400



Mixmaster Duplex DFA 600



Mixmaster Duplex DFA 1400

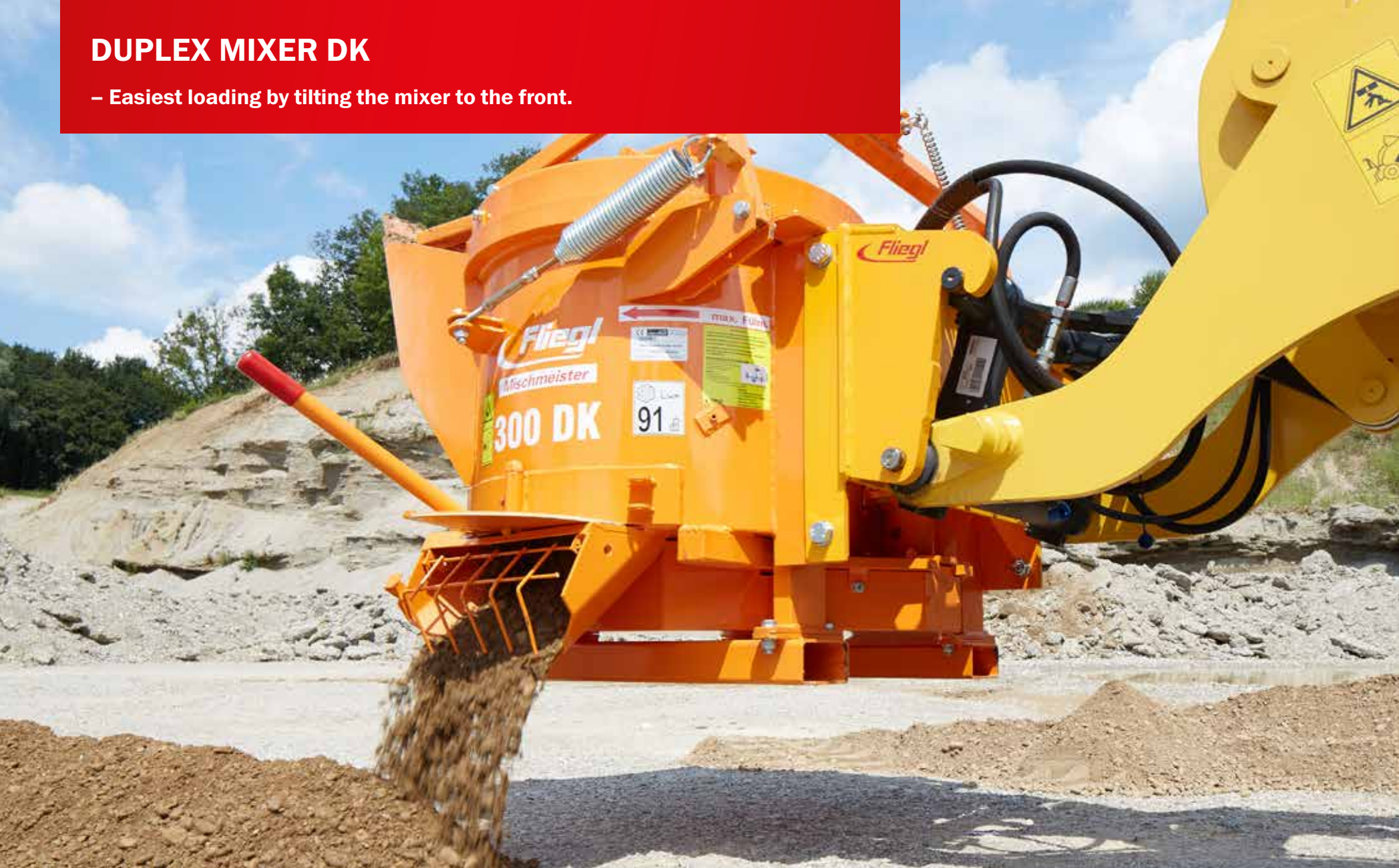
MIXMASTER DUPLEX DFA		300 DFA	400 DFA	600 DFA	1000 DFA	1400 DFA
Container volume	approx. l	600	750	1100	1450	2000
Max. filling capacity/effective volume	l	300	400	600	1.000	1.400
Width	approx. m	1,40	1,60	1,90	2,30	2,70
Diameter	approx. mm	2 x 800	2 x 900	2 x 1100	2 x 1250	2 x 1500
Weight	approx. kg	700	740	1.150	1.640	1.980
Required oil quantity	l/min.	only 30	only 38	only 45	only 65	only 90
Electric switchover valve ==> 1 x double-acting sufficient		Standard/12V	Standard/12V	Standard/12V	Standard/24V	Standard/24V
Max. operating pressure	bar	180	180	180	180	180
Pressure relief valve (PLV)		optional	optional	optional	optional	optional
Minimum lifting force	t	1,4	1,8	2,6	4	5,5
Wheel loader operating weight	t	up to 4,5	up to 5,6	from 5,7	from 8,5	from 11
Mounting for fork-lift		Standard	Standard	Standard	Standard	Standard
Wheel loader mounting (screwed version)		optional	optional	optional	-	-
Wheel loader mounting (welded version)		-	-	-	optional	optional
Possibility to discharge via outlet chutes on both sides		Standard	Standard	Standard	Standard	Standard
Possibility to discharge to the front		Standard	Standard	Standard	Standard	Standard
Type of drive		Chain drive		Heavy transfer case		

LOADING OF MIXER WITH HYDRAULIC FILLING CHUTE:

- Simply drive into the pile of gravel, close the filling chute and add the other components
- Higher output
- Easy to clean

DUPLEX MIXER DK

– Easiest loading by tilting the mixer to the front.



Mixmaster Duplex DK 1400



Mixmaster Duplex DK 600

OPENING THE LOADING SHOVEL BY SIMPLY TILTING IT TO THE FRONT



MIXMASTER DUPLEX DK		300 DK	400 DK	600 DK	1000 DK	1400 DK
Container volume	approx. l	600	750	1100	1450	2000
Max. filling capacity/effective volume	l	300	400	600	1.000	1.400
Width	approx. m	1,40	1,60	1,90	2,30	2,70
Diameter	approx. mm	2 x 800	2 x 900	2 x 1.100	2 x 1.250	2 x 1.500
Weight	approx. kg	640	720	1.100	1.620	1.940
Required oil quantity	l/min.	only 30	only 38	only 45	only 65	only 90
Max. operating pressure	bar	180	180	180	180	180
Pressure relief valve (PLV)		optional	optional	optional	optional	optional
Minimum lifting force	t	1,4	1,8	2,6	4	5,5
Wheel loader operating weight	t	up to 4,5	up to 5,6	from 5,7	from 8,5	from 11
Mounting for fork-lift		Standard	Standard	Standard	Standard	Standard
Wheel loader mounting (screwed version)		optional	optional	optional	-	-
Wheel loader mounting (welded version)		-	-	-	optional	optional
Possibility to discharge via outlet chutes on both sides		Standard	Standard	Standard	Standard	Standard
Type of drive		Chain drive		Heavy transfer case		

MIXMASTER DUPLEX DFA AND DK

The robust design guarantees higher efficiency and maximum service life.



Screwed wheel loader mounting (optional)



Welded wheel loader mounting (optional)



Every Duplex Mixer has forklift pockets (standard)

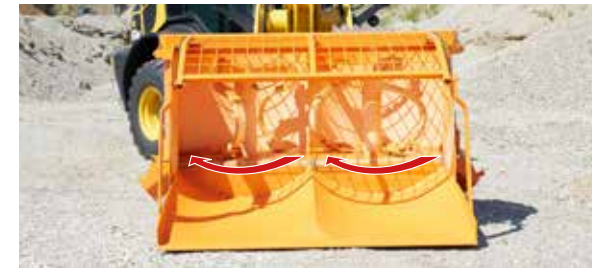


The outlet chutes are available for left and right side and are operated via lever mechanism.



Optional: Hydraulically operable discharge flap

DUPLEX-MIXER FLIEGL



80 - 90% less wear



Significantly shorter mixing times
approx. 75% time savings



Approx. 60% lower oil consumption
of hydraulic drive motor



Wheel loader operation with
low motor speed



Less fuel consumption and
wear of wheel loader



Easy to clean



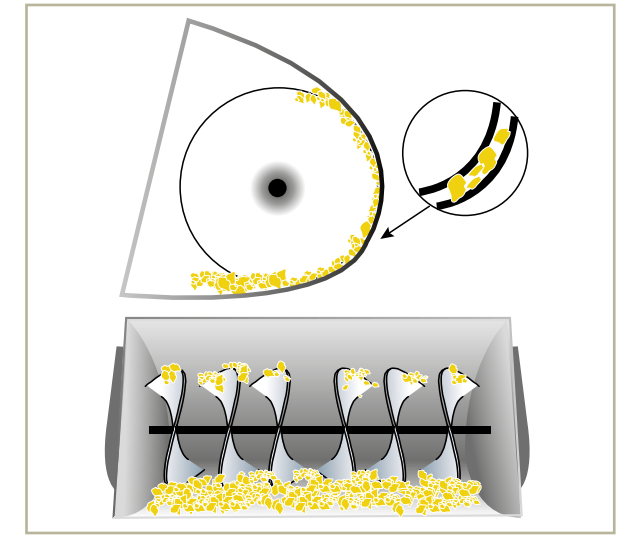
Actual usable volume =
machine type
e.g. 400DK
approx. 400 liters net capacity
container volume approx. 750 liters



Mixing of recycled material and
coarser granulations possible



SCREW-MIXER



Very high wear and tear of
mixing screw and shovel walls
caused by stoneware



Poor mixing quality despite
longer mixing times



Very high oil consumption



Wheel loader operation with
high motor speed



Very high fuel consumption and
wear of wheel loader



Difficult to clean



Description of usable volume
does normally not reflect reality
e.g. type 750
approx. 350-400 liters net capacity
container volume approx. 750 liters



Usually not possible

MIXMASTER FA

MIXMASTER WITH ELECTRIC MOTOR

MIXMASTER FA
with automatic filling and oil drive



MIXMASTER WITH ELECTRIC MOTOR



Mixmaster 300 E



Mixmaster 1002 SS

Technical data – Mixmaster FA

TYPE		400 FA	600 FA	800 FA
Capacity	approx. l	360	500	700
Weight	approx. kg	490	680	820
Diameter	m	1,1	1,25	1,5
Forklift/Wheel loader	necessary lifting capacity approx. t	2	2,5	3,5
Required oil quantity	l/min.	40	50	60

Technical data – Mixmaster with electric motor

TYPE		300 E	602 SS	802 SS	1002 SS
Maximum capacity	l	300	500	700	1000
Weight	approx. kg	300	730	850	1050
Diameter	approx. m	1,15	1,25	1,5	1,8
Elektric motor	KW	5,5	11,0	11,0	15

MOBILE MIXER DMA – APPLICATION EXAMPLES

Building of riding arena - DMA 2500 Profi



Building-material dealer - DMA 1400 Profi



Building of reservoir
in a high mountain region
DMA 2500 Profi



Horticulture and landscaping
DMA 2500 Profi



Landfill construction - DMA 2500 Profi



Recycling company - DMA 1000



Road construction and civil engineering
DMA 2500



Building construction in West Africa
DMA 2500 Profi



Horticulture and landscaping - DMA 1400



Horticulture and landscaping - DMA 600



Recycling company - DMA 1400

MOBILE MIXER DMA PROFI

Ideal for building construction (also supporting concrete components), screed, mortar, road construction, concrete recycling, landfill construction, dam construction or in roof tile production.



Mobile and fully automatic concrete mixing plant

Excellent price-performance ratio



Special civil engineering - DMA 1000 Profi



Civil engineering - DMA 1400 Profi



Digital weighing cell

STANDARD EQUIPMENT

- Big and robust filling chute
- Hydraulic aggregate
- Hydraulic slider
- Adjustable support feet
- Weighing device
- Remote control/Mixer control

OPTIONS

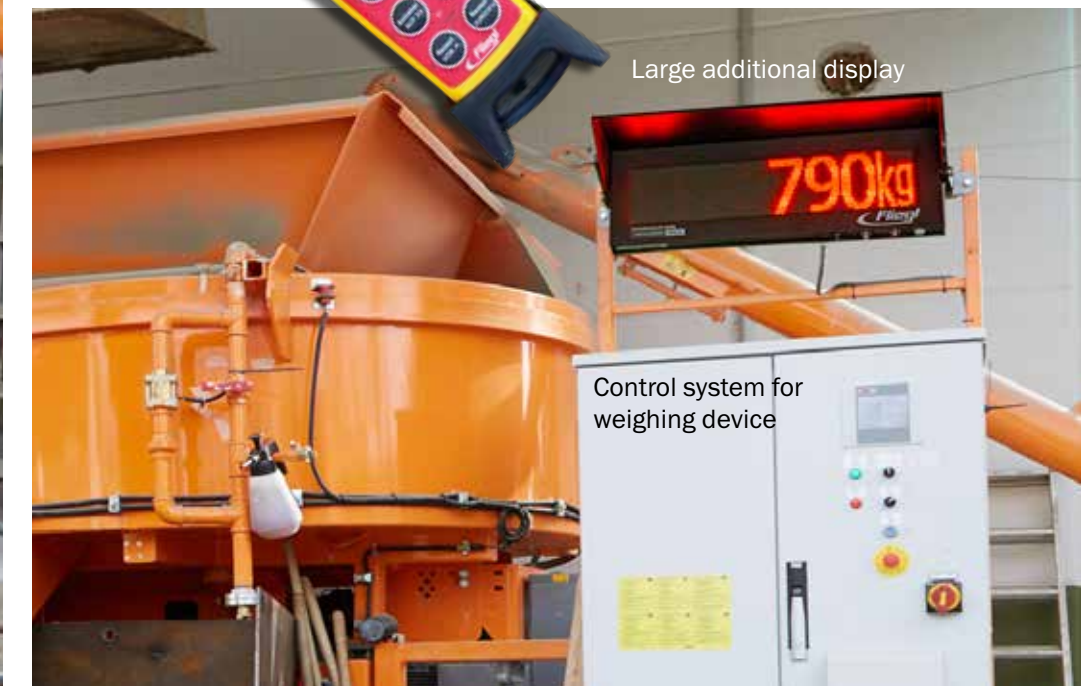
- Operator's platform
- Conveyor belt
- Cement auger

WEIGHING DEVICE WITH DOSING FUNCTION

- 99 mix designs
- Suitable for dosing device or for manual addition of 1st component (further components always automatically)
- For manual addition of the 1st component: "Automatic mixture control" customizes the entire mix design
- Remote control
- Large additional display for weighing device
- Magnetic valve for automatic water supply
- Electrical preparation for cement auger
- Electrical preparation for conveyor belt



Remote control with emergency stop



Large additional display

Control system for weighing device

1	2	3	4	5	6	7	8	9	10	11	12	13	14	15	16	17
Tag	Zeit	Monat - Jahr:	Sequenz	Rezept	Kies IST [kg]	Kies SOLL [kg]	Wasser IST [kg]	Wasser SOLL [kg]	Zement IST [kg]	Zement SOLL [kg]	Mischzeit [sec]					
23.	12:52			1 c12/15	3100	3100	0	0	490	485	120					
23.	13:51			1 c12/15	1380	1380	0	0	220	216	120					
24.	06:47			1 c12/15	2830	2830	0	0	440	443	120					
24.	06:58			2 c12/15	3050	3050	0	0	480	477	120					
24.	07:07			3 c12/15	3130	3130	0	0	495	490	120					
24.	07:17			4 c12/15	3110	3110	0	0	490	487	120					
24.	07:27			5 c20/25	2310	2310	0	0	540	539	120					
24.	09:57			1 c12/15	2250	2250	0	0	360	352	120					
24.	11:36			2 c12/15	2950	2950	0	0	470	462	120					
24.	11:44			3 c12/15	1060	1060	0	0	165	166	120					
24.	14:49			5 c12/15	2340	2340	0	0	370	366	120					

Mixing log book: USB stick with reports to be read out



Technical data and features Mixmaster DMA

TYPE		600 DMA	1000 DMA	1400 DMA	1000 DMA Profi	1400 DMA Profi	2500 DMA Profi
Capacity	approx. l	600	1000	1400	1000	1400	2500
Width	approx. m	2,1	2,4	2,7	2,4	2,7	4,0
Diameter	mm	2 x 1100	2 x 1250	2 x 1500	2 x 1250	2 x 1500	2 x 2200
Weight	approx. kg	2100	2500	2900	2500	2900	4500
Electric motor	KW	11	22	22	22	22	30
Operator's platform	approx. kg	optional	optional	optional	optional	optional	optional
Adjustable support feet		●	●	●	●	●	●
Hydraulic slider	approx. kg	●	●	●	●	●	●
Hydraulically foldable cover		optional	optional	optional	●	●	●
Lining 400 HB		optional	optional	optional	●	●	●
Weighing device with dosing function		-	-	-	●	●	●
Large additional display		-	-	-	●	●	●
Electrical interface for conveyor belt		-	-	-	●	●	●
Electrical interface for cement auger		-	-	-	●	●	●
Remote control		-	-	-	●	●	●
Frequency converter for main drive		-	-	-	●	●	●

DUPLEX Mixer 09-2016-GB Dimensions, weights and technical data are subject to changes. Some illustrations show special equipment.

Fliegl Bau- und Kommunaltechnik GmbH · Bürgermeister-Boch-Str. 1 · D-84453 Mühldorf, Germany
 Tel. +49 (0)8631 307 382 · Fax: +49 (0)8631 307-553 · E-Mail: baukom@fliegl.com

www.fliegl-baukom.de